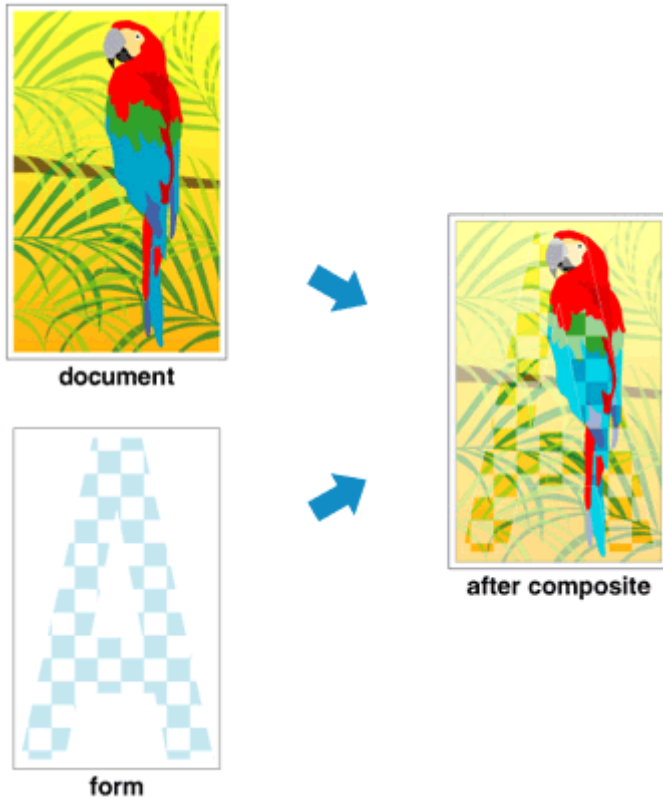


Changing the Clear Coating Settings

When you execute clear coating, the printer applies chroma optimizer (CO) ink onto the printing surface and allows you to adjust the glossiness.

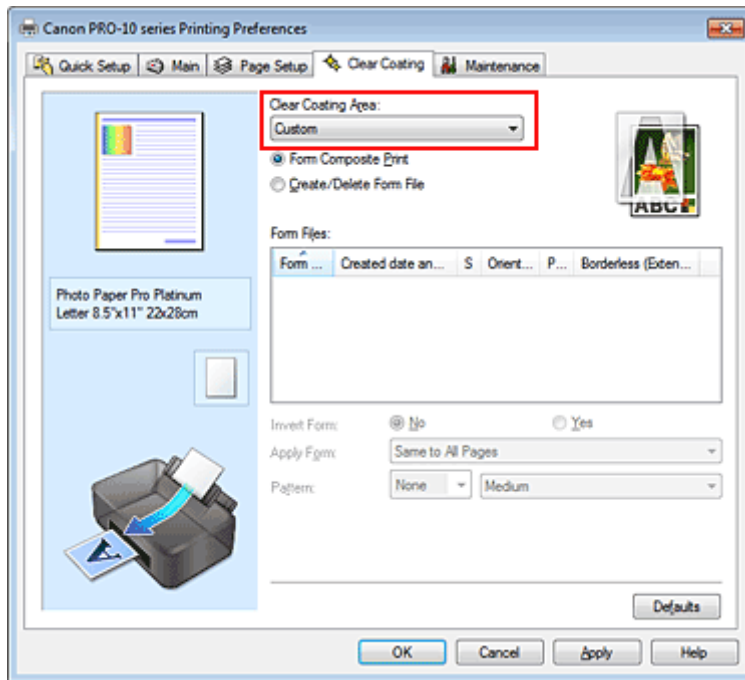
You can also create the areas to be clear-coated and save the area information as a form. When you use a form to perform clear coating, you can achieve decorative effects that cause certain characters and patterns to pop out.



This section explains procedures for changing the clear coating settings.

1. Open the printer driver setup window
2. Setting the clear coating area

On the Clear Coating tab, find Clear Coating Area and select Auto, Overall, or Custom, whichever best suits your purpose.



Auto

The printer automatically sets the areas to be clear-coated and whether clear **coating** is to be executed. It may be possible to reduce the ink consumption of the chroma optimizer (CO) or to accelerate the print speed.

Overall

The printer clear-coats the entire print area.

If selecting Auto produced unsatisfactory clear **coating** effects, selecting Overall may improve the results.

Custom

Use a form to specify the clear **coating** areas.

Select this option also when you are creating or deleting a form.

If you select Auto or Overall, go to step 5.

If you select Custom, perform the subsequent steps.

Important

- On the Quick Setup or Main tab, look at Media Type. If a media type other than Photo Paper Plus Glossy II, Photo Paper Pro Platinum, Photo Paper Pro Luster, Photo Paper Plus Semi-gloss, Other Glossy Paper (Wide Margins), or Other Glossy Paper is selected, you cannot select Overall or Custom.
- Depending on which print quality is set on the Quick Setup or Main tab, you may not be able to select Custom.
- If Overall is selected and the media type is changed to one that cannot use Overall, the clear **coating** area setting is changed to Auto.
- If Custom is selected and the media type or the print quality is changed to one that does not support form composite print or form file creation, the clear **coating** area setting is changed to Auto.

Selecting a form file

Click Form Composite Print, and then from Form Files, select the form file to be used.

The white areas of the selected form become the clear **coating** areas. Clear **coating** is not applied to the non-white areas.

Note

- To display form files in a list, you must first create form files. For instructions on creating form files, see "Create a Form File."
- You can rearrange the displayed form files by clicking the list heading.

Set the form details

If necessary, specify the following settings.

Invert Form

You can reverse the clear **coating** areas.

Apply Form

Set the method for applying the form to the document pages.

To apply the first page of the selected form to the entire document, select Same to All Pages.

To make the document and the form correspond in sequence from the first page, select Individual Page.

Pattern

Select the pattern type and size from the list.

The pattern is applied to areas that are not clear coated.

Complete the setup

Click OK.

When printing is executed, the clear **coating** effect that was set is added when the document is printed.



Important

- The decorative effects of clear **coating** may diminish depending on the document to be clear coated.
- Selecting Black and White Photo Print on the Quick Setup or Main tab may diminish the decorative effects of clear **coating**.

Related Topic

 [Create a Form File](#)

Create a Form File

You can create clear **coating** areas by using the application software of your choice, and save those areas as a form. An unnecessary form file can be deleted.

This section describes the procedure for creating a form file.

Create a Form File

1. Creating data for use as a form file

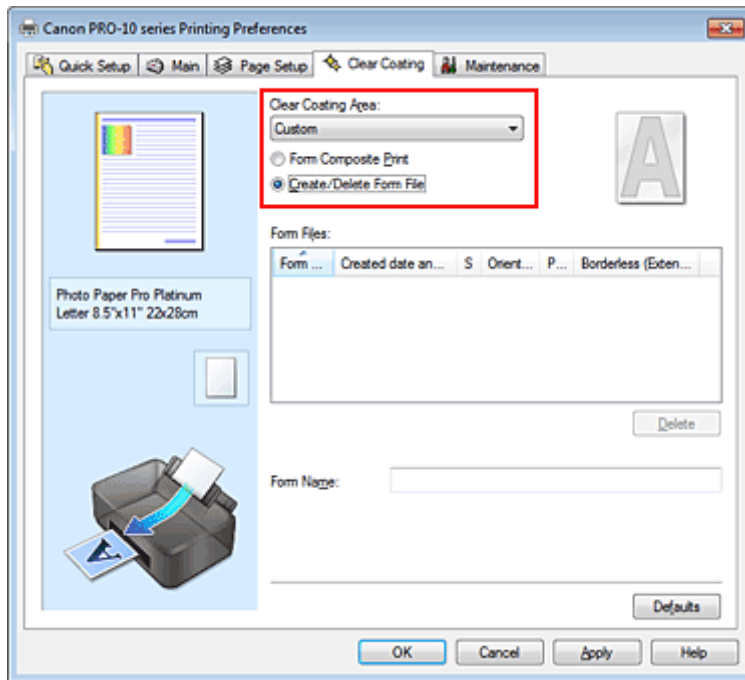
Using the application software of your choice, create data that contains the characters and patterns to be used as the form file.

The white areas of the created data become the clear **coating** areas. Clear **coating** is not applied to the non-white areas.

2. Open the **printer driver setup window** from the application software

3. Selecting Create/Delete Form File

On the Clear **Coating** tab, find Clear **Coating** Area and select Custom. Then select Create/Delete Form File.



4. Setting the form name

In Form Name, enter the name of the form to be created.

Note

- Spaces, tabs, and returns cannot be entered at the beginning or end of a form name.
- You cannot set a form name that is the same as the name of an existing form file.
- You cannot change the name of the created form.

Complete the setup

Click OK on the Clear **Coating** tab.

Click OK when the confirmation message appears.

When you execute printing, the data that you created using the application software is saved as a form file.



Important

- To create a form file, you must connect this printer to your computer and turn on the printer.
- When Create/Delete Form File is selected, printing is not actually performed from the printer even if printing is executed.
- When Create/Delete Form File is selected, a print preview is not displayed even when Preview before printing is selected on the Main tab.
- Create/Delete Form File and Form Composite Print can be executed only from the setup window of the printer driver. Some applications do not support these functions.



Note

- It may take a while for the list of created form files to appear.
- When creating a form file, use the same settings (such as Page Size and Borderless) that were used for form composite print.
- You can register up to 30 form files.

Deleting Unnecessary Form File

1. Selecting Create/Delete Form File

On the Clear **Coating** tab, find Clear **Coating** Area and select Custom. Then select Create/Delete Form File.

2. Select the form file to be deleted

From Form Files, select the form file to be deleted.

3. Delete the form file

Click Delete. When the confirmation message appears, click OK.
The selected form file is deleted from the Form Files.



Important

- To delete a form file, you must connect this printer to your computer and turn on the printer.